

## TIPS FOR USING LOWERCASE BEADUCATION ORIGINAL LETTER STAMP SETS

If you look at the stamping end of these letter stamps, you'll notice that the letter is engraved on a circular face. Each letter is perfectly placed on that circle so when you line up all of the stamps, the letters all align perfectly.

**The circular face can act as a guide.**



Notice that the taller letters with ascenders such as the "f" and "h" seem to sit higher than the center of the stamp and letters with descenders (tails) such as the "j" and "g" sit lower than center on the circular face. This precision placement allows all the letters to align perfectly with each other.



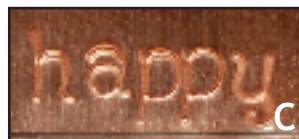
### Top to Bottom Alignment

Since the letters are so precisely placed, you can draw a line on your metal and line up the bottom of the stamp with that line. (Figure A) Then when you stamp your letters, they will all be aligned top to bottom.

Your letters will end up 1.5mm above the line. (Figure C)

### Spacing Between Letters

To properly space the letters from left to right, align your stamp with your drawn line (follow directions from above) and place the stamp over the previous letter covering most of the letter and exposing just the left edge of the letter (if stamping from left to right). (Figure B)



This trick works when aligning most letters except the skinny ones "i", "l" or the extra wide letters such as "w". When aligning letters next to those, you will need to come up with your own system to adjust the stamp accordingly.

These tips will take a bit of getting used to. After practicing and stamping about 10 words, I got it down and was able to stamp the following...



Please note, these techniques won't work with letter sets that are not Beaducation Originals. The letters on those sets are not as precisely placed.

**Have Fun!**  
**Lisa Niven Kelly**

**BEADUCATION.COM**