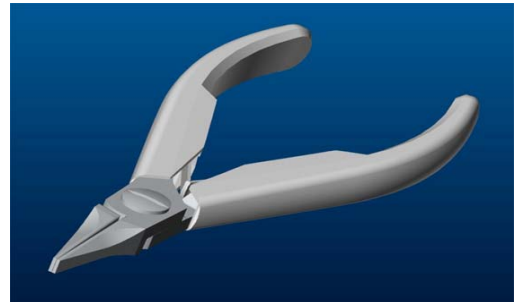




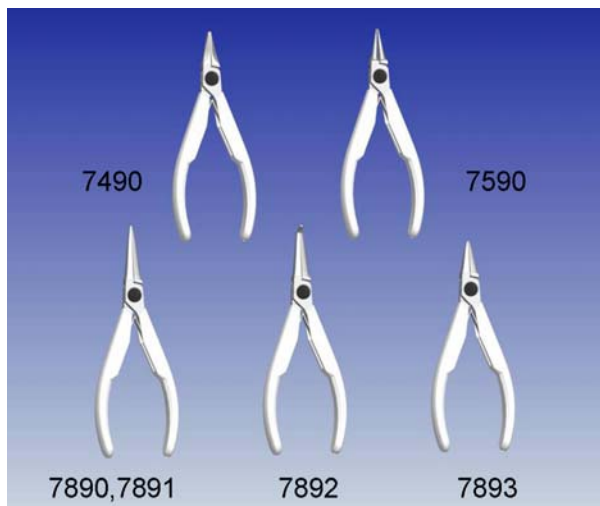
Product Information: New design on Supreme and RX Holding Pliers

Lindstrom has updated the design of the Supreme Series and RX Series pliers with a new, high precision screw joint that increases the useful life of the pliers, and reduces the amount of play – even with heavy use. The new design makes it possible to recondition the joint and screw as well, decreasing the lifetime cost of the pliers.



With the old box joint design (above left) Lindstrom presented a pliers design second to none. With our new precision screw joint (above right) we have retained all the strength and accuracy of the jaws with the same time-tested specifications, and have added a measure of durability unsurpassed by other brands. The well-earned reputation of the Lindstrom RX Series and Lindstrom Supreme Series is further enhanced by these features:

- No damage or play after 10,000 rigorous cycles of twisting, showing an ability to withstand abuse and high-torsion work (old design breaks before 4,000 cycles)
- Significantly less play in the joint than box design after 100,000 cycles providing long lasting precision holding ability
- All pliers that previously had a box joint will change to lap joint, improving the serviceability and performance of the range
- All pliers and cutters are ESD safe
- Similar changes planned for Supreme Series oblique and end cutters, bringing the cutters into the 80 Series with same high quality design that can be reconditioned
- The new design streamlines the Specially Engineered tool process for some assortments, shortening lead-times and enabling new formats for specific applications



All the above pliers are being supplied to stock throughout Quarter 2, 2008.

Snap-on Industrial Specialty Distribution / Lindstrom Precision Tools
19240 San Jose Avenue | City of Industry, CA 91748 | Tel 626.956.1201 | Fax 626.839.1213

© Copyright 2008 Lindstrom Precision Tools. All rights reserved.